



## **Quick Recovery for MS Exchange EDB to MS Outlook PST**

**Quick Recovery for MS Exchange EDB to MS Outlook PST** is a professional Exchange Recovery tool to convert edb emails to pst, when Exchange Server goes down.

Software is designed and developed to recover edb emails from corrupt, damaged exchange database files of MS Exchange Server 2000, 2003, 2007 and 2010.

**Quick Recovery for EDB to PST** is an exchange mailbox migration tool, built for easy and simple ms exchange server recovery. Software extract exchange edb mailboxes and makes them easy to use with MS Outlook.

**Quick Recovery for EDB to PST** conversion tool is helpful in completely recovering exchange edb files lost, damaged or corrupted due to unexpected system shutdown, software problems, virus attacks etc.

### **Features**

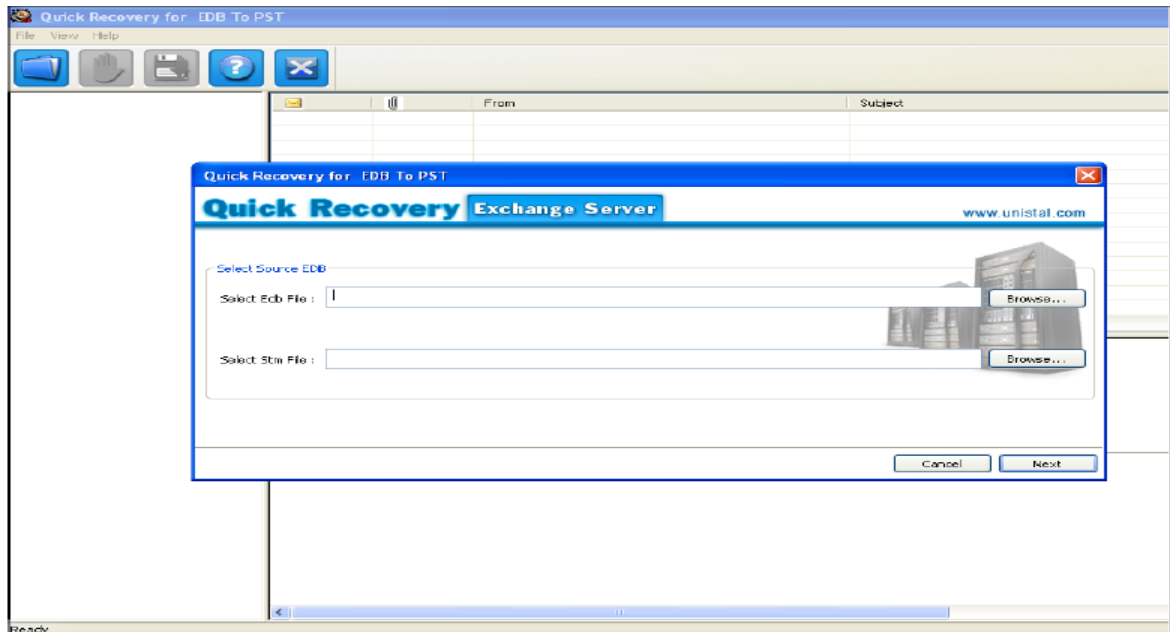
### **Interface**

### **System Requirement**

## Features

- Simple and well guided steps to recover Mailboxes.
- Support MS Exchange 2010, 2007 and 2003.
- Recovers Mailboxes, Emails, contacts, calendars, attachment etc.
- Recovers complete attachments, zipped attachments and images of all format.
- Offers Preview of data before saving.
- Software creates separate folders for all emails, deleted Items and for other items such as calendar, journals, notes, contacts, tasks etc.
- Allows the saving of all mailbox or individual mailbox.
- Save the recovered data in **.pst** file extension, so that it can easily be imported in the MS Outlook.
- Unique Guided File Excavation Technology (GFETch) used.

## Interface



## **MS Exchange Versions Supported**

- MS Exchange Server 5.0, 5.5, 2000, 2003, 2007

## **System Requirements**

**Operating System :** Windows Server 2008, Windows 7, Windows 8, Vista, Windows Server 2003 and Windows **XP**

**MS Exchange :** 2003, 2007 and 2010.

**Processor :** 800 MHZ processor or higher.

### **RAM**

- 512 MB (Windows XP & Windows Server 2003)
- 1 GB (Windows Server 2008, Windows vista, Windows 7 and Windows 8)

**Hard Disk :** 50 MB available hard disk space.