



QUICK RECOVERY FOR LINUX

[Quick Recovery for Linux](#)

[Operation Steps](#)

[Who suffers most](#)

[Features Quick Recovery for Linux](#)

[Recovery Modes](#)

[Quick Mode](#)

[Advance Mode](#)

[Frequently Asked Question](#)

Quick Recovery for Linux

Quick Recovery for Linux is an advance Data recovery Software tool. It recovers Data from Hard Disk where Super Block is accidentally deleted or data structure (VTOC, Boot Block, Super Block, Inodes, and Data Block) is damaged. It performs complete scan of damaged Hard Disk and extract data from it and displays it in a tree structure. Quick Recovery for Solaris software uses GFETch (Guided File Excavation Technology) for searching and retrieving the lost data and hence is a fast, simple and easy to use advance data recovery software tool.

There are two operation steps:

Analysis:

This step involves the complete diagnosis and search operation. Quick Recovery searches for the file system information from the beginning of the disk and reverse calculates the disks file structure. The various file system information comprises VTOC, Boot Block, Super Block, Inodes, and Data Block. Quick Recovery also finds previously existed partitions. The analysis is to be followed in two modes. First the **Quick mode** has to be run. This mode quickly analyses the disk and displays the files. Most of the cases are resolved in this mode itself, Cases where partition, boot records are damaged then Quick Recovery goes into this Mode. In cases where quick mode does not show the required files to be recovered, then choose **Advance mode**. This is an exhaustive method where all lost folders/files are excavated and our proprietary algorithm (GFETch) is used. This mode is to be used for extreme cases like Block corruption or long lost folders.

Display & Save:

After the analysis, all files and folders will be displayed. Select the folders/files that are to be recovered and save them to a working disk.

Who suffers most?



Features Quick Recovery for Linux

Recovers Linux data from accidental File Deletion.
Recovers data even if disk is not accessible.
Heuristic search help locate partitions and folders quickly. GUI designed to have least user interaction. Long file name support.
Locating LINUX partition in dual booting disk supported.
Recovers files even if partition is lost.
Complete recovery is possible even if LINUX Operating System gets corrupted.
Recovers even if there is corruption of Super Block.
Completely access files if Login password is lost.

100% data recovery is possible if;

If there is problem with Partition Table, Boot Block and Data Block.
Files are accidentally deleted. Operating system not booting.
Disk has been formatted and small files are to be recovered.
Drive is not shown or accessible

How Quick Recovery Linux Works?

Install the **Quick Recovery Linux** on a working computer having windows operating System
Attach the crashed Linux disk as secondary master or slave
Run **Quick Recovery for Linux**
After complete analysis the lost folders and files will be displayed
Select file or folder to recover, give the target path where, the file(s)/folder(s) to be recovered

Recovery Modes

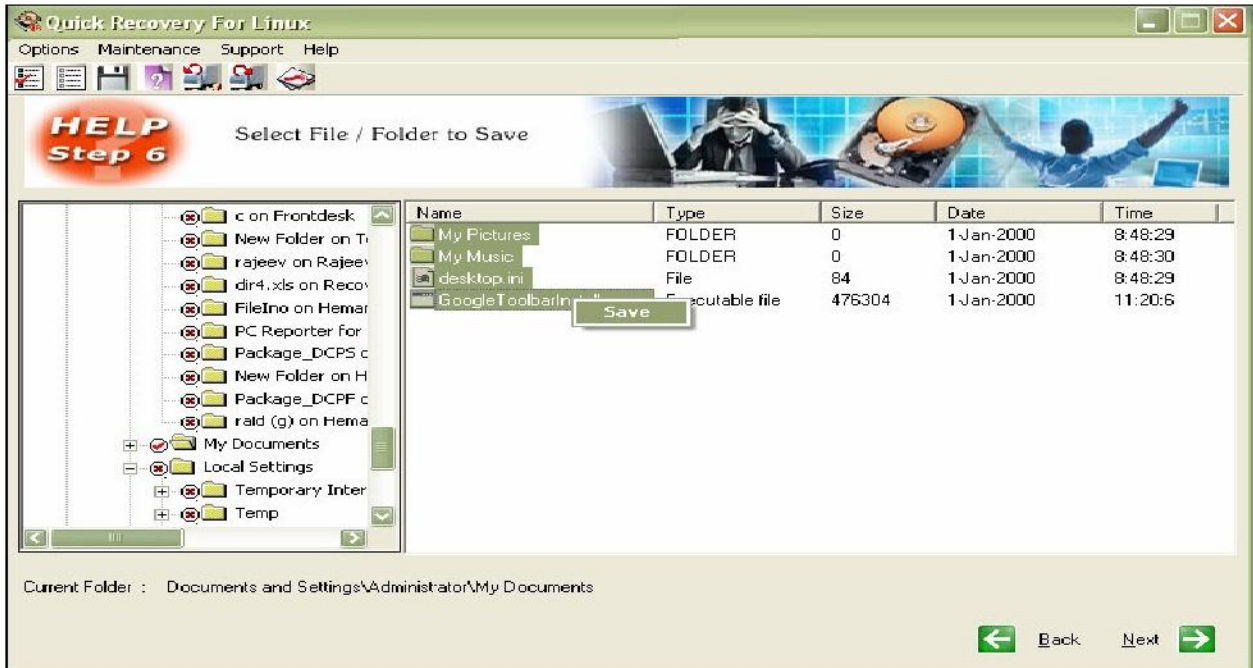
Quick Mode: Quick mode quickly analyses the disk and displays the files. Most of the cases are resolved in this mode itself, Cases where partition, Super Blocks, are corrupted



Now you will be shown the list of partitions in the selected drive. Select the partition that needs to be recovered. If all the partitions are not listed then click on search for more partitions. Only one partition can be selected at a time. Click on Next.



After the search and analysis is done, the directory list will be displayed. Now the menu bar options will be active. Select the folders by the highlighting the folder using mouse by single mouse click and shift + mouse click for multiple folders or files.



To save the selected files, right click on the required folder or file and click on save. Alternatively choose **Options > Save**. Now a menu will be shown where you may enter the path to save the selected files

Advance Mode: In cases where Quick Mode does not show the required files to be recovered, then choose Advance mode. This is an exhaustive method where all lost folders and files are excavated and our proprietary algorithm (GFETch) is used. This mode is to be used for extreme cases like changed Partitions, broken directory entries or long lost folders.

Choose the partition type: Choose the file system type of the partition that is to be recovered.



Start Sector: If you are aware of the approximate location from where the partition starts, you may enter the value here

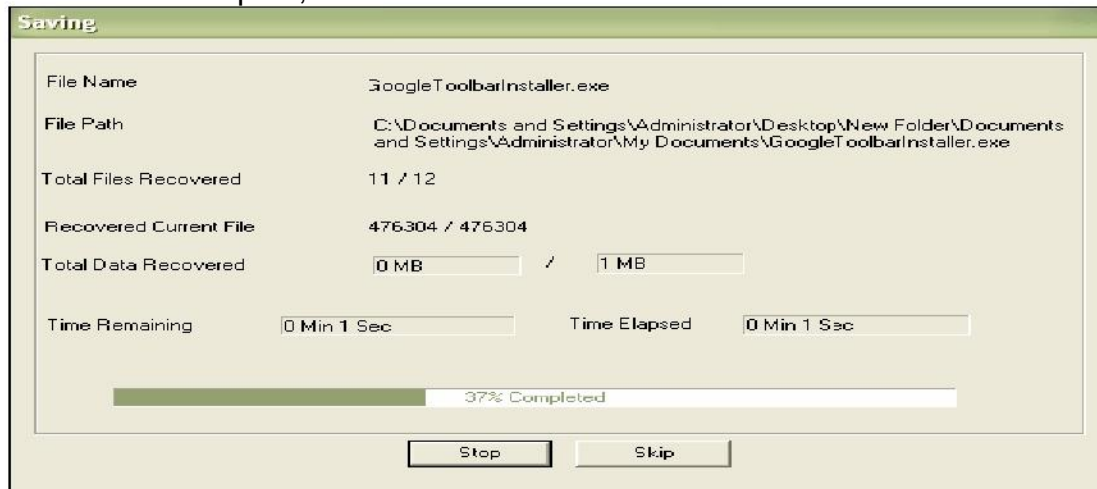
End Sector: It is recommended to enter the last sector number here

Search entire disk: Choose this if you are unsure of the above values

The search process will start.



Once the searching and analysis of advance mode is completed, Quick Recovery will display the list of found files and directories in windows explorer format. Select the files and folder you, which want to recover. Save the data on a safe destination path, this destination location should not be in crashed disk.



Limitations Quick Recovery

- Media surface is completely damaged
- Lost files are overwritten
- File system is compressed after data loss
- Fragmented files after a format
- File internally corrupted
- Low level format is done
- Data Wipe is used to delete files

File System Supported

- Ext2, Ext3 file system

System Requirements

- Windows NT/2000/XP/2003 Server/Vista/ Windows 7/Windows 8
- 800MHz processor or higher.
- RAM:
 - 256 MB (Windows XP)
 - 1 GB (Windows Vista ,Windows 7 & Windows 8)
- 50 MB available hard disk space

FREQUENTLY ASKED QUESTIONS

How does QUICK RECOVERY work?

QUICK RECOVERY is data recovery software. It bypasses the operating system, calculates the system parameters internally, and searches for data heuristically. After a brief analysis QUICK RECOVERY reports the percentage of recovery and files that can be recovered.

If my computer is not booting, then how can QUICK RECOVERY access it?

QUICK RECOVERY is to be run from another hard disk having Windows OS. The crashed HDD is to be connected as secondary disk. Then QUICK RECOVERY bypasses the system area of the crashed disk and physically searches for data

Why cannot QUICK RECOVERY recover 100% data from large deleted files?

When files are deleted, they are not removed from their physical location but their links get zeroed up. So if large files are fragmented, then their chain cannot be reconstructed. Smaller files are mostly stored contiguously and are not fragmented, so they can be recovered.

Why cannot QUICK RECOVERY recover 100% data from formatted disks?

The reason is the same as above. After formatting, the links get fully zeroed. Moreover if files and folders have been copied after formatting, then nothing can be retrieved.

Why cannot we recover the files on the same partition?

This is because, the lost files when recovered on the damaged partition may overwrite the lost files, and hence the recovery may not be authentic or 100%.