



## **Quick Recovery for Lotus Notes NSF - MS Outlook PST**

**Quick Recovery for NSF to PST Conversion** is a NSF to PST Conversion Software to migrate Lotus Notes NSF to MS Outlook PST. Convert NSF to PST using Professional NSF to PST Conversion Software. Quick Recovery's unique Guided File Excavation Technology (GFE Tech) helps in locating email files and folders. Software export all text and attachments and recreate the same folder structure as you have in your Lotus Notes database to your Outlook mail box. You may export directly to Outlook.

### **Features**

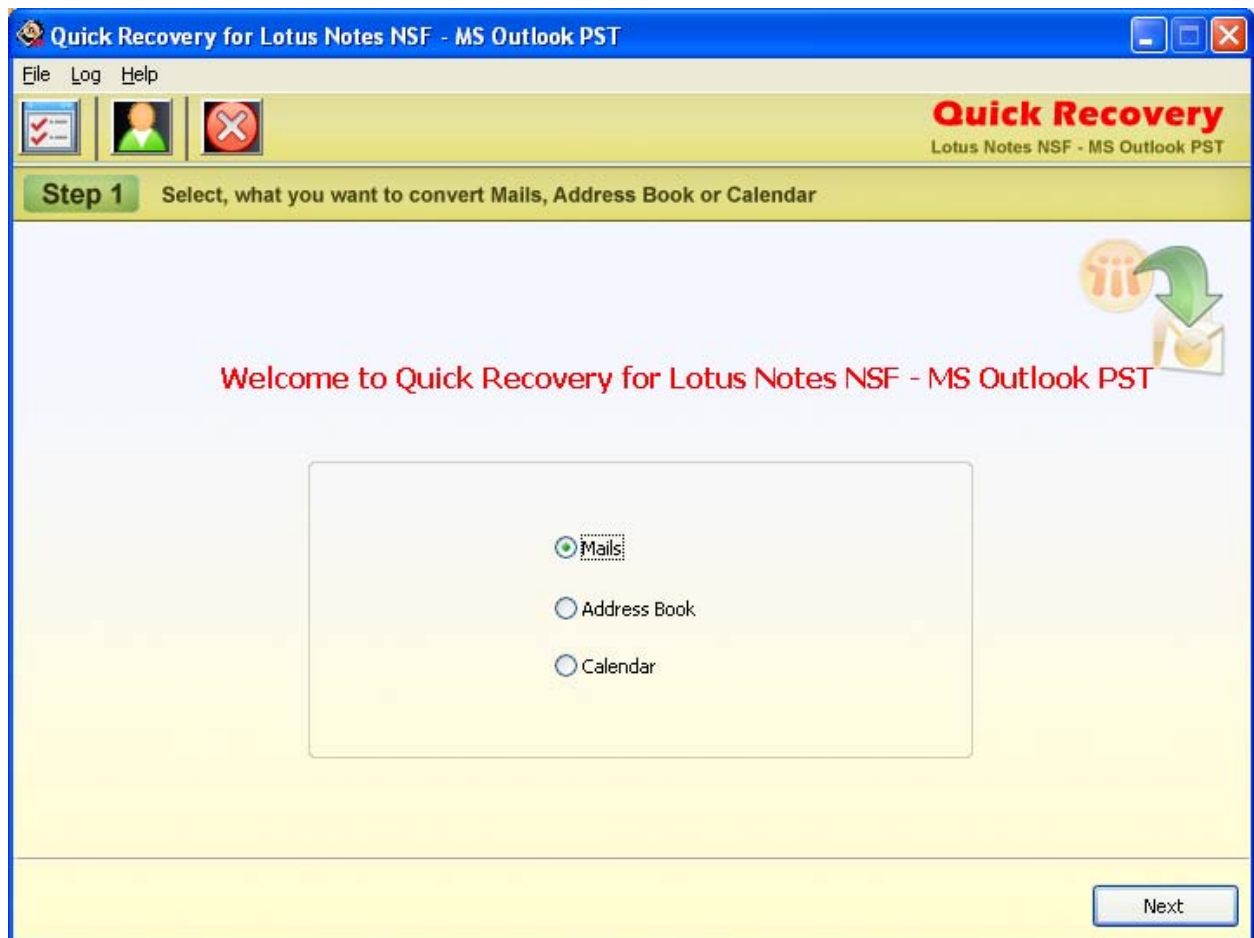
### **Interface**

### **System Requirement**

## Features

- Convert NSF file to PST file.
- Successfully converts NSF files with all of its objects like text, attachments, Folders/subfolders, Contacts/Groups, Encrypted email and attachments.
- Software allow users to converts messages with all of its properties like to, from, cc, bcc, sent/receive dates and time.
- Software automatically locates your NSF file.
- Option to backup (\*.nsf) files.
- Calendar (meetings, reminders, appointment etc.)

## Interface



## **Lotus Notes Versions Supported**

- Lotus Notes version 5.0, 6.0, 7.0, 8.0 and above.

## **System Requirements**

- Windows Server 2008, Windows 7, Vista, Server 2003 and Windows XP
- 800 MHZ processor or higher
- RAM:
  - 512 MB (Windows XP & Windows Server 2003)
  - 1 GB (Windows Server 2008, Windows 7 & Vista)
- 50 MB available hard disk space
- Lotus Notes version 5, 6, 7, 8 and above.
- Outlook 2000 or above (XP, 2003, 2007, 2010).